

SuperAP® 600 IA-12 DR

Rugged AP/Bridge

High Power Wi-Fi with Dual Integrated Directional Antennas

ValuePoint™ Networks' SuperAP 600IA-12 DR is designed for **indoor/outdoor** Wi-Fi deployments in hotels, apartment buildings, outdoor, or industrial applications. It is an Access Point, with dual adjustable **630mW B/G** radio outputs, and 2 entirely enclosed 12 dBi Flat Panel Antennas. **Total output is up to 40 dBi per radio.** This unit is packaged in the same compact form factor as the SuperAP, available with a **side mount**, perfect for mounting at the end of hallways, above ceilings, or on the outside of a building. The SuperAP 600IA can act as a Dual Access Point, Bridge repeater, or an AP Repeater. Pricing for the 600IA-12 DR is more cost effective than ever before, dramatically lowering your infrastructure costs, and increasing your Return on Investment.



Hardware Features

The SuperAP 600IA-12 DR comes with 2 versatile integrated flat-panel 12 dBi 120 degree directional antennas and a multi-position secure bracket. Your backbone Ethernet cable connects to the AP through a moisture-proof gland and the entire unit is sealed.

The 600IA-12 DR supports **IEEE 802.3af 48Volt Power over Ethernet**. It uses *Transmit Power control*, enabling it to be used in a wide variety of special applications where the wireless output needs to be controlled for the environment.

User Authentication

Secure authentication based on industry standards

The 600IA-12 DR Advanced Version incorporates 802.1x/Radius-based authentication features that interoperate with a back-office Radius server to

provide authentication of each user. Radius-based authentication means a 600IA-12 DR is compatible with a wide variety of shared usage and public access applications.

In addition, the 600IA-12 DR can authenticate users based on their MAC address if desired.

Security and Management

Highly secure and manageable

In addition to Radius-based and MAC-based authentication in the Advanced Version, the 600IA-12 DR supports the 64-bit and 128-bit Wireless Encryption Protocol, and disabling of SSIDs.

The 600IA-12 DR is easy for administrators to setup through Web-based management, or our Windows-based network manager. Additionally, management can be done via SNMP V 1, V 2, 802.1x and 802.1d MIBs. It is UPnP-enabled and supports remote firmware upgrades.

Extended Network Range

Repeater functionality

The 600IA-12 DR is able to operate as a repeater in addition to an access point, allowing it to communicate with other compatible AP/routers to form a Wireless Distribution System. This greatly extends the reach of the wireless network. With its built-in antenna and powerful 630 mW radio, a range of 10 miles is possible. Aligning directional antennas is easy using built-in antenna alignment assistance. Up to six WDS links can be established per radio.

Compatibility

Wi-Fi

The 600 IA-12 DR is fully compatible with the Wi-Fi standard, ensures the usability with any Wi-Fi compatible wireless equipped device. Wi-Fi is the fastest growing standard for Internet access and is supported on a vast number of PCs today.

About ValuePoint Networks

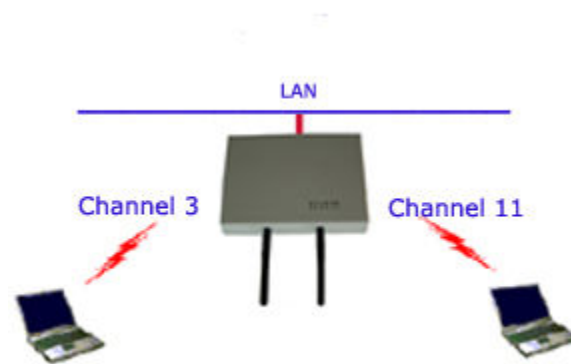
ValuePoint Networks is the foremost manufacturer of price leading Gateway Controllers, Rugged Access Points, and outdoor Mesh gear.

ValuePoint products are used in Hospitality, MTU/MDU, industrial, WISP, outdoor, hotspot, municipal, and enterprise applications. Using ValuePoint gear, you can light up more for less, reduce your capital expenditures, and improve your Return on Investment.

www.valuepointnet.com

Dual Radio Usage Scenarios

Dual AP



Bridge Repeater



AP Bridge



Technical Specifications

Access Point Specification

Wireless

- IEEE 802.11b/g
- Frequency band: 2.4-2.4835GHz 5.8GHz
- Modulation Techniques: DSSS (CCK, DQPSK, DBPSK)
- Media Access Protocol: CSMA/CA with ACK
- Data Rate: 54Mbps
- AP Range: 2000m, 6600ft line of sight (client dependent)
- WDS Range: 15,000m, 49,000ft line of sight
- 630 mWatt transmit power with Transmit power control
- 92 dBm - 74 dBm receiver sensitivity @FER = .08

Networking

- DHCP Client and Server
- 6 WDS repeater links(per radio)
- AP client mode
- 802.1d Bridging functionality
- UPnP

Security

- MAC based access control
- 64/128 bit RC4 WEP
- WPA, WPA2 (TKIP, AES)

Management

- Web-based management
- Antenna alignment and RSSI monitoring
- Web-based or TFTP firmware upgrade
- System logging (local or remote)
- SNMP v1/v2, MIB II with traps, 802.1x, 802.1d MIBs
- Telnet

Interfaces

- 1 10/100M Ethernet LAN port

Compatibility

- Works with any Wi-Fi certified interfaces

Operating Environment

- Operating Temperature: -20 to 70 C, -4 to 158 F
- Storage Temperature: -20 to 70 C, -4 to 158 F
- Humidity: Max. 95% non-condensing
- 10.5 x 6 x 6 In. / 3.2 Lbs.

Electrical

- 802.3af 48 Volt Power Over Ethernet

Regulatory Approvals

- FCC part 15 Class B, VCCI Class B, CE Mark, UL

Advanced Features

- 802.1x Network Access Control (EAP-MD5, EAP-TLS)
- AP load balancing
- Distance Setting (ACK timing)
- Maximum of 4 SSIDs per radio
- Association Control

Antenna Specification

Type: Panel antenna

Linear: V or H

Frequency: 2400-2483.5MHz

Impedance: 50 ohm

Antenna Pattern: 120 Degree H-Plane on opposing sides (240 Degree total)

VSWR: ≤ 2.0

Gain: 12 dBi

Power handling: 10 Watt

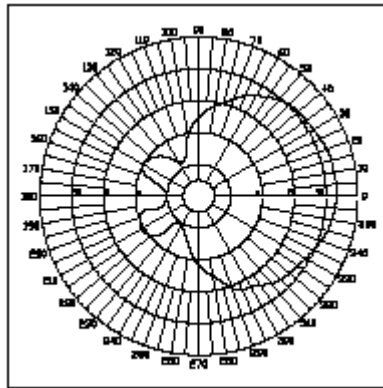
Weight: 400g, 11.1oz(include swivel base).

Operation temp: -30 to 60 C, -22 to 140 F

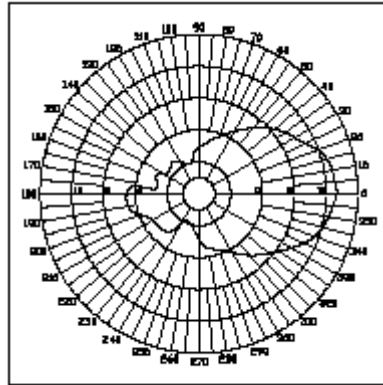
Material:

- Cover & Base: Injection ABS
- Mount: Stainless steel, Electro-plating

H-Plane (each direction)



E-Plane (each direction)



Warranty

One year parts and labor
30 day satisfaction guaranteed